

0 N Oregonian Ave - 20,000 SF of IG2 Land

\$299,000



Nick Krautter
Oregon Principal Broker
Washington Managing Broker
Nick@cityandstatere.com
503.901.8100

City & State
REAL ESTATE

35 NE Weidler Street
Portland, OR 97232

www.CityandStateRE.com

Well located property in North Portland Industrial area. Easy access to Columbia Corridor and North Portland Rd, intersecting industrial yards.

The property has a variety of uses including lay down space, truck parking or redevelopment for industrial uses. Two tax lots totaling 20,000 SF of IG2 (General Industrial) land.

Excellent opportunity for owner/user or contractor in a well established industrial zone within Portland Proper. Less than 15 minutes from Downtown Vancouver and centrally located for access to the rest of the Portland metro area.

Please call for more information

LAND INFORMATION

Lot Size:	0.46 Acres
Total SF:	20,000 SF ... 100'x200'
Land Use:	Developable Land
Zoning:	IG2, General Industrial
Property Taxes:	\$573.29 2022
Slope:	Gentle

0 N Oregonian Ave - 20,000 SF of IG2 Land

\$299,000

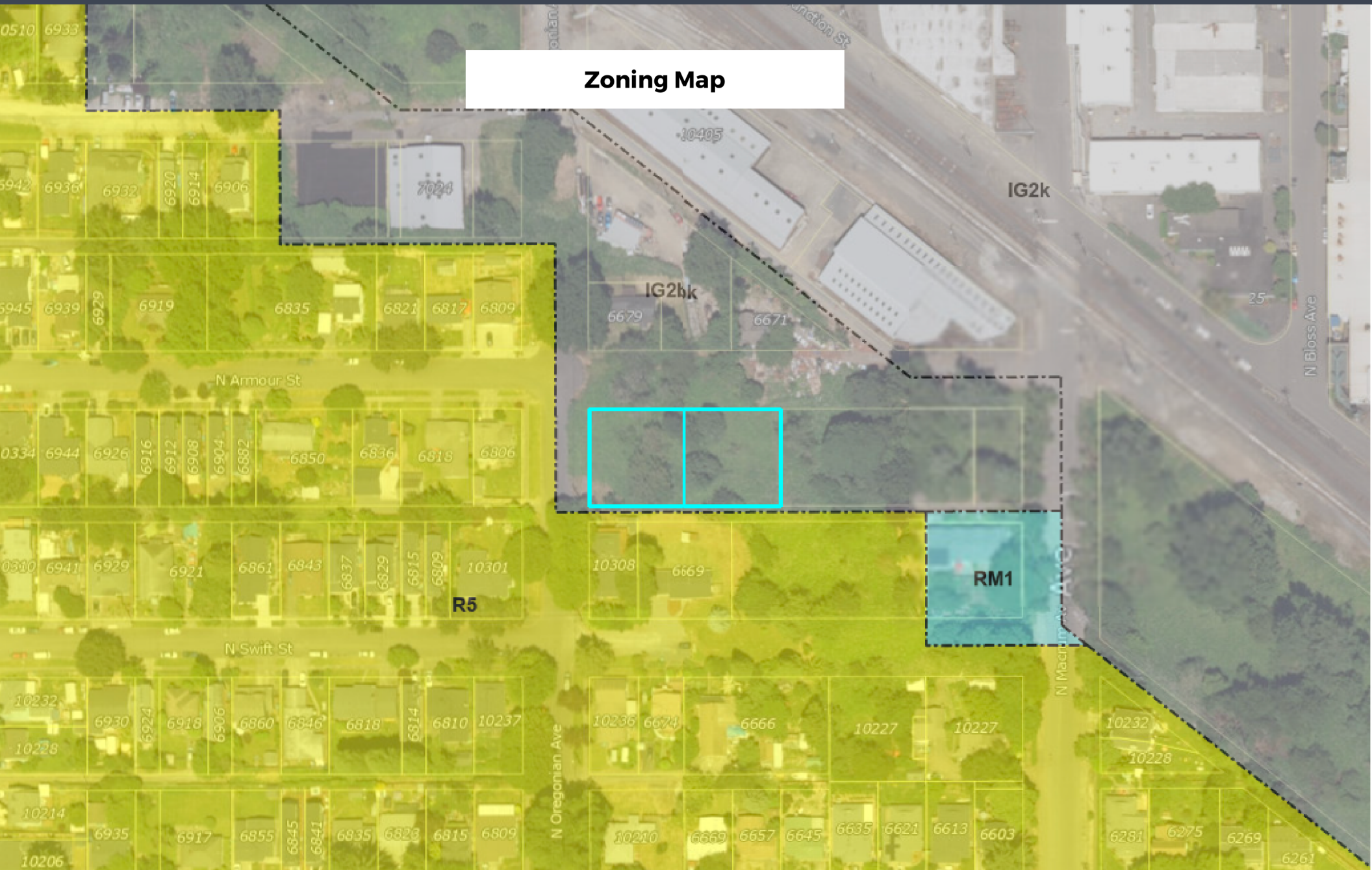


2 Tax Lots - 10,000 SF Each

Nick Krautter
 Oregon Principal Broker
 Nick@cityandstare.com
 503.901.8100

City & State
 REAL ESTATE

35 NE Weidler Street
 Portland, OR 97232
 www.CityandStateRE.com



Zoning Map

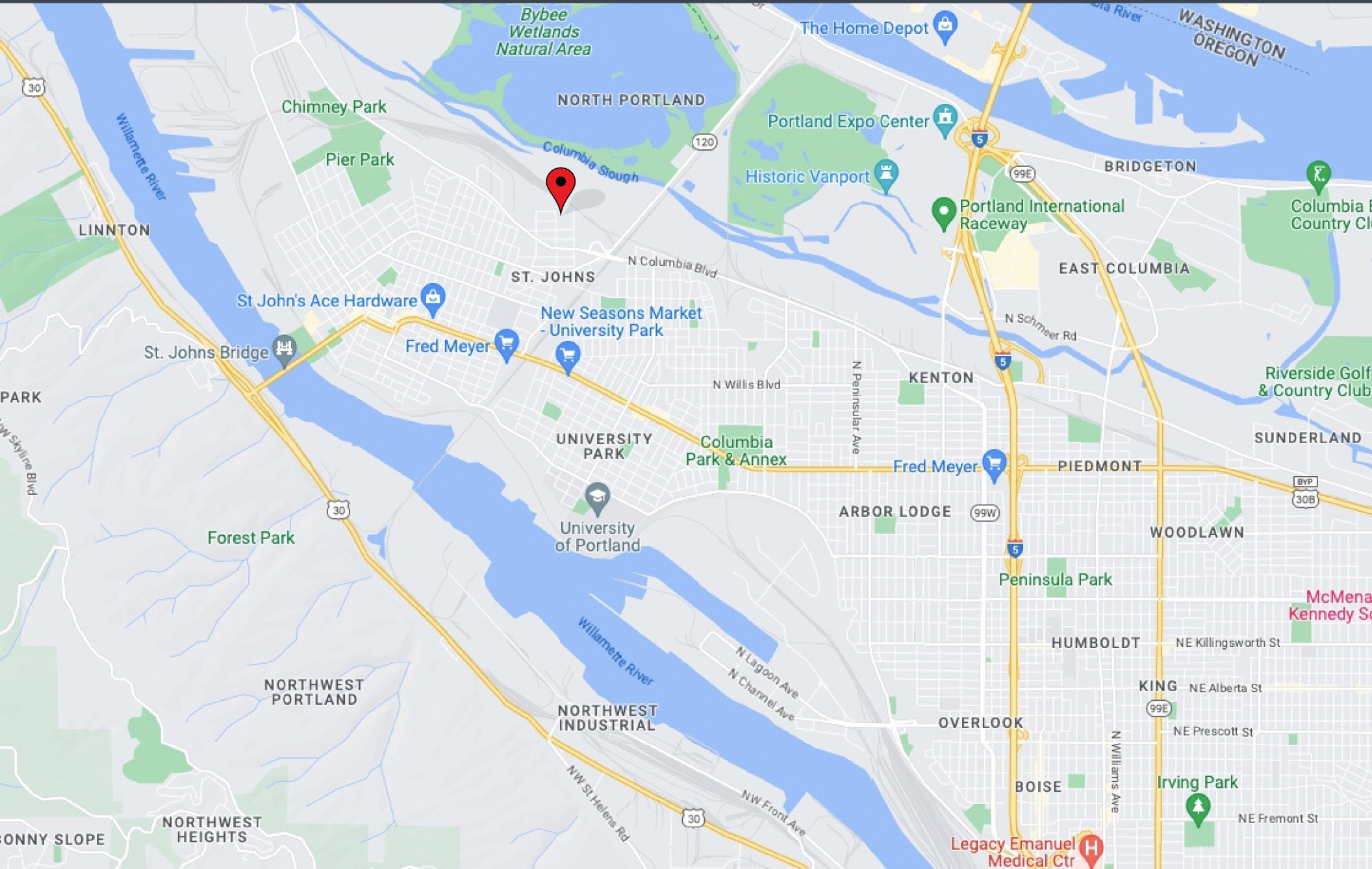
Nick Krautter
 Oregon Principal Broker
 Nick@cityandstare.com
 503.901.8100

City & State
 REAL ESTATE

35 NE Weidler Street
 Portland, OR 97232
 www.CityandStateRE.com

0 N Oregonian Ave - 20,000 SF of IG2 Land

\$299,000



Nick Krautter
 Oregon Principal Broker
 Nick@cityandstatere.com
 503.901.8100

City & State
 REAL ESTATE

35 NE Weidler Street
 Portland, OR 97232

www.CityandStateRE.com



Nick Krautter
Oregon Principal Broker
Nick@cityandstatere.com
503.901.8100

City & State
REAL ESTATE

35 NE Weidler Street
Portland, OR 97232

www.CityandStateRE.com

City & State

REAL ESTATE

35 NE Weidler Street | Portland, OR 97232

Nick@CityandStateRE.com | 503.901.8100

www.CityandStateRE.com